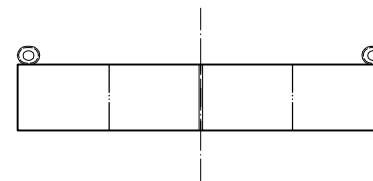
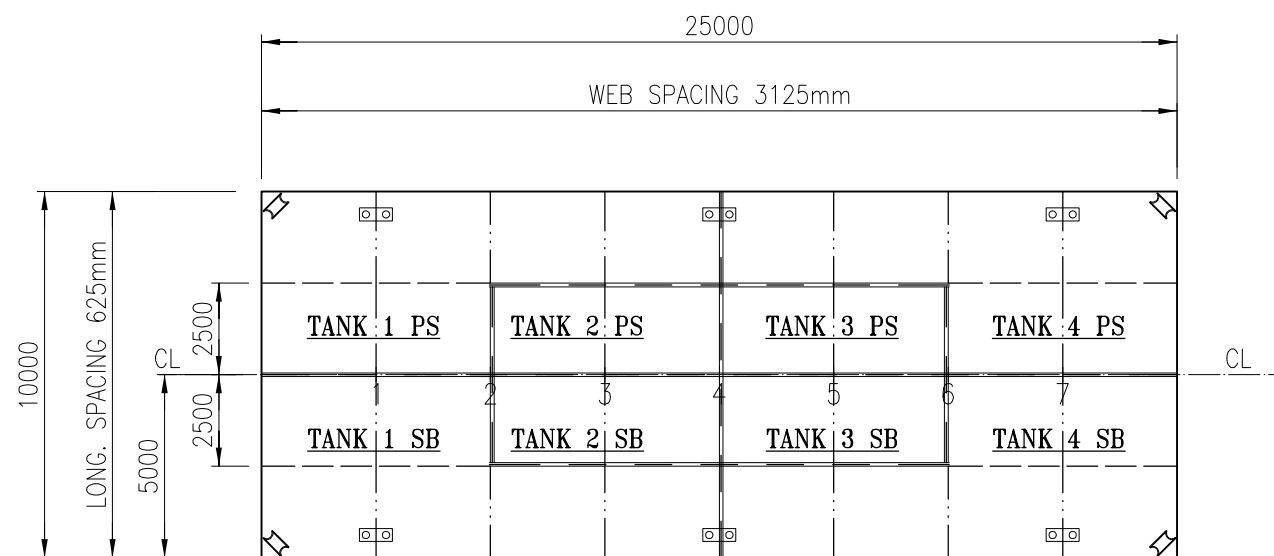


**SIDE VIEW**



**SECTION**



**MAIN DECK**

**MAIN DIMENSIONS:**

LENGTH OVER ALL: 25,00 m  
 BREADTH MOULDED: 10,00 m  
 DEPTH MOULDED: 1,80 m  
 GROSS: 105 GT  
 NET: 31 NT  
**CARGO CAPACITY**  
 279 tonnes internat. freeboard  
 312 tonnes Sea area A

**"MELINA"**


CALL SIGN: SGVC

PERMISSIBLE LOADS			
LOAD CASE	MAX. PERM. LOAD	DIM. PART	
ANYWHERE ON DECK	8,0 TONNES /m <sup>2</sup>	Bending, long	
EVEN DISTRIBUTION: TRV. WEB	9 TONNES /m.	Bending	
EVEN DISTRIBUTION: BHD.	50 TONNES /m.	Buckling	
POINT LOAD: ANYWHERE ON DECK	3,5 TONNES **	Plate thickness	
POINT LOAD: ANYWHERE ON WEB	14 TONNES **	Bending	
POINT LOAD: ANYWHERE ON BULKHEAD	24 TONNES **	Weld	
POINT LOAD: BULKHEAD/ WEB	48 TONNES **	Weld	
POINT LOAD: BULKHEAD/ BULKHEAD	48 TONNES **	Weld	

\*\* = ASSUMED PRINT: 300x300mm.  
 EVERY OTHER LOADCASE TO BE CONSIDERED SPECIALLY.

DRAUGHT IN METRES TO B.L.	KM <sup>3</sup> IN METRES ABOVE B.L.	FREE-BOARD IN METRES	DEADWIGHT IN TONNES A' 1000 KG		
			IN FRESH WATER $\rho=1,000$	IN BRACKISH WATER $\rho=1,020$	IN SALT WATER $\rho=1,025$
1,6	6,4	0,2	300		311
1,4	7,2	0,4	275		275
1,2	8,1	0,6	250		250
1,0	9,4	0,8	225		225
0,8	11,4	1,0	200		200
0,6	14,6	1,2	175		175
0,4	21,6	1,4	150		150
0,2	41,8	1,6	125		125
0,0			100		100
			75		75
			50		50
			25		25
			0		0
LIGHT SHIP WEIGHT 65 tonnes					

CAPACITIES OF WATER BALLAST TANKS					
TANK No.	VOLUME m <sup>3</sup>	LCG fr. L/2	VCG fr. BL	TCG fr. CL	TRV MOM. OF INERTIA
4 PS & 4 SB	77 m <sup>3</sup> EACH	6,91	0,94	± 2,95	89,5
3 PS & 3 SB	28 m <sup>3</sup> EACH	3,125	0,90	± 1,25	8,1
2 PS & 2 SB	28 m <sup>3</sup> EACH	- 3,125	0,90	± 1,25	8,1
1 PS & 1 SB	77 m <sup>3</sup> EACH	- 6,91	0,94	± 2,95	89,5

D	LOADING SCALE ADDED	OCT.2009	OLA	
C	PERMISSIBLE LOADS MODIFIED DUE TO ADDED PILLARS.	020829	PHE	
ISSUE:	DESCRIPTION:	DATE:	SIGN:	
 <b>Sandinge Bogsering &amp; Sjötransport</b> Skal Hedarna 166 SE-453 92 Lysekil Sweden Tel. +46 (0)523 66 07 45 Fax. +46 (0)523 66 07 22 E-mail: info@sandinge.com Web: www.sandinge.com	YARD:	DATE: 020207	CHECKED:	SCALE: 1:200 (A3)
		DRAWN: PHE		
TITLE: <b>MELINA CAPACITY PLAN</b>		DWG NO. 02228-152-2	ISSUE: D	